

3.625"w panel



3.875"w panel

- #1 Choice of Veterinarians⁸
- #1 Choice of Dog Owners⁹
- #1 Choice of Dogs¹⁰



Heartgard[®]
(ivermectin/pyrantel) **Plus**

¹ Campbell WC. Use of ivermectin in dogs and cats. In: Campbell WC, ed. *Ivermectin and Abamectin*. New York: Springer-Verlag, 1989:246-248.

² Heartworm basics. American Heartworm Society website. <https://www.heartwormsociety.org/pet-owner-resources/heartworm-basics>. Accessed March 7, 2019.

³ Centers for Disease Control and Prevention. What Every Pet Owner Should Know About Roundworms & Hookworms. Available at <http://stacks.cdc.gov/view/cdc/13560>. Accessed December 16, 2014.

⁴ Schantz PM. Zoonotic ascarids and hookworms: the role for veterinarians in preventing human disease. In: *Emerging Vector-Borne and Zoonotic Diseases, The Compendium Suppl* 2002;24(1):47-52.

⁵ Fluorescein Angiography. Department of Ophthalmology and Visual Sciences. University of Iowa Health Care, Carver College of Medicine website. <https://medicine.uiowa.edu/eye/facilities/eye/node/301>.

⁶ Roundworm Infection, Toxocariasis, FAST FACTS. Available at http://www.cfsph.iastate.edu/FastFacts/pdfs/toxocariasis_F.pdf. Accessed December 16, 2014.

⁷ Freedom of Information: NADA140-971 (January 15, 1993).

⁸ Data on file at Boehringer Ingelheim.

⁹ Data on file at Boehringer Ingelheim.

¹⁰ Data on file at Boehringer Ingelheim.



HEARTGARD[®] and the Dog & Hand logo[®] are registered trademarks of Boehringer Ingelheim Animal Health USA Inc. ©2019 Boehringer Ingelheim Animal Health USA Inc., Duluth, GA. All rights reserved. PET-1356-HGD0419.

4"w panel

Heartgard[®]
(ivermectin/pyrantel) **Plus**

**THE
 PROTECTION
 DOGS COME
 RUNNING
 FOR**



DOGS LOVE THE REAL-BEEF CHEW⁷



HEARTGARD® Plus (ivermectin/pyrantel) is the **ONLY** heartworm preventive made with REAL beef. Dogs love the taste⁷ which helps make it easy – and enjoyable – for dog owners to give each month.

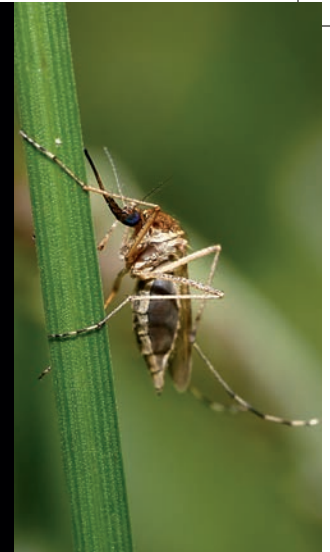
Dog owners and veterinarians have trusted HEARTGARD® (ivermectin) Brand Products for over 30 years.



- ✓ It's safe for puppies at least 6 weeks of age and weighing 0 pounds or more
- ✓ It's approved for breeding and lactating dogs
- ✓ Safe for all breeds, including Collies

IMPORTANT SAFETY INFORMATION: HEARTGARD Plus is well tolerated. All dogs should be tested for heartworm infection before starting a preventive program. Following the use of HEARTGARD Plus, digestive and neurological side effects have rarely been reported. For more information, contact your veterinarian or visit www.HEARTGARD.com.

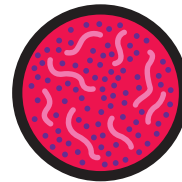
ONE MOSQUITO BITE CAN CAUSE LIFE-LONG DAMAGE.



Heartworm disease occurs when a mosquito infected with heartworm larvae bites your dog.



As the mosquito feeds, larvae are deposited on the dog's skin, and migrate into the tissue through the bite wound.



If the larvae are not eliminated, they mature into adult heartworms and cause significant damage to your dog's heart and lungs. Untreated heartworm infections can be fatal.



Mosquitoes (and heartworm disease) are everywhere

Diagnosed in all 50 states, heartworm disease is a year-round threat to both indoor and outdoor pets. That's why the American Heartworm Society recommends testing every 12 months for heartworm and giving a heartworm preventive 12 months a year.²

HEARTWORMS AREN'T THE ONLY WORMS TO WATCH OUT FOR.

Hookworms and roundworms also pose a significant threat to your dog. These intestinal parasites can also infect humans.



Hookworms in dogs:

- Attach and feed on blood in dogs' small intestines
- They can cause anemia, debilitation and even death
- Are spread via nursing, or when infective larvae pass through a dog's skin, or when a dog accidentally ingests hookworm larvae in their environment



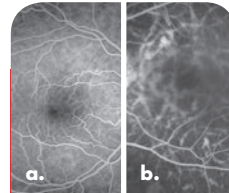
Roundworms in dogs:

- Grow rapidly, up to 6 inches long, irritating the lining of the intestines and stealing nutrients from the host
- They can cause diarrhea, weight loss and swollen abdomen
- An infection can move transplacentally from a mother, to her puppies prior to birth. Less common infections can occur via nursing



Hookworms in humans:

- Typically enter through the skin
- Can cause rashes, itching, organ inflammation³



Roundworms in humans:

a. A normal retina.^{*5} b. Infected eye, brighter areas show worm tracks.

- Can cause impaired or loss of vision⁶
- Enter the body via accidental ingestion
- The CDC reports 10,000 people in the US are infected with roundworms each year⁶



**Over 90% of
puppies under
3 months old
are infected with
roundworms⁴**



HEARTGARD® Plus (ivermectin/pyrantel) protects your dog from hookworms and roundworms, too!

Want to learn more? Visit HEARTGARD.com

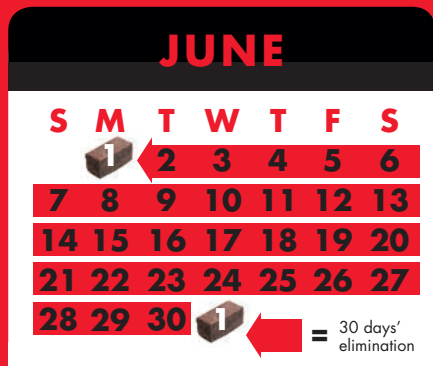
*Boehringer Ingelheim Animal Health USA Inc. acknowledges The University of Iowa and EyeRounds.org for permission to reproduce this copyrighted material.

4" w panel



CONSISTENCY MATTERS

When you give HEARTGARD® Plus (ivermectin/pyrantel), it eliminates the heartworm larvae and gastrointestinal parasites that your dog may have contracted over the PREVIOUS 30 days.¹ That's why it's important to give HEARTGARD consistently 30 days apart, so that no heartworm larvae have a chance to mature into actual adult heart worms.



IMPORTANT SAFETY INFORMATION: HEARTGARD Plus is well tolerated. All dogs should be tested for heartworm infection before starting a preventive program. Following the use of HEARTGARD Plus, digestive and neurological side effects have rarely been reported. For more information, contact your veterinarian or visit www.HEARTGARD.com.

3.875" w panel

Heartgard® Plus (ivermectin/pyrantel)

CHEWABLES

CAUTION: Federal (U.S.A.) law restricts this drug to use by or on the order of a licensed veterinarian.

INDICATIONS: For use in dogs to prevent canine heartworm disease by eliminating the tissue stage of heartworm larvae (*Dirofilaria immitis*) for a month (30 days) after infection and for the treatment and control of ascarids (*Toxocara canis*, *Toxascaris leonina*) and hookworms (*Ancylostoma caninum*, *Uncinaria stenocephala*, *Ancylostoma braziliense*).

DOSAGE: HEARTGARD® Plus (ivermectin/pyrantel) should be administered orally at monthly intervals at the recommended minimum dose level of 6 mcg of ivermectin per kilogram (2.72 mcg/lb) and 5 mg of pyrantel (as pamoate salt) per kg (2.27 mg/lb) of body weight. The recommended dosing schedule for prevention of canine heartworm disease and for the treatment and control of ascarids and hookworms is as follows:

Dog Weight	Chewables Per Month	Ivermectin Content	Pyrantel Content	Color Coding On Foil Backing and Carton
Up to 25 lb	1	68 mcg	57 mg	Blue
26 to 50 lb	1	136 mcg	114 mg	Green
51 to 100 lb	1	272 mcg	227 mg	Brown

HEARTGARD Plus is recommended for dogs 6 weeks of age and older. For dogs over 100 lb use the appropriate combination of these chewables.

ADMINISTRATION: Remove only one chewable at a time from the foil-backed blister card. Return the card with the remaining chewables to its box to protect the product from light. Because most dogs find HEARTGARD Plus palatable, the product can be offered to the dog by hand. Alternatively, it may be added intact to a small amount of dog food. The chewable should be administered in a manner that encourages the dog to chew, rather than to swallow without chewing. Chewables may be broken into pieces and fed to dogs that normally swallow treats whole.

Care should be taken that the dog consumes the complete dose, and treated animals should be observed for a few minutes after administration to ensure that part of the dose is not lost or rejected. If it is suspected that any of the dose has been lost, redosing is recommended.

HEARTGARD Plus should be given at monthly intervals during the period of the year when mosquitoes (vectors), potentially carrying infective heartworm larvae, are active. The initial dose must be given within a month (30 days) after the dog's first exposure to mosquitoes. The final dose must be given within a month (30 days) after the dog's last exposure to mosquitoes.

When replacing another heartworm preventive product in a heartworm disease preventive program, the first dose of HEARTGARD Plus must be given within a month (30 days) of the last dose of the former medication.

If the interval between doses exceeds a month (30 days), the efficacy of ivermectin can be reduced. Therefore, for optimal performance, the chewable must be given once a month on or about the same day of the month. If treatment is delayed, whether by a few days or many, immediate treatment with HEARTGARD Plus and resumption of the recommended dosing regimen will minimize the opportunity for the development of adult heartworms.

Monthly treatment with HEARTGARD Plus also provides effective treatment and control of ascarids (*T. canis*, *T. leonina*) and hookworms (*A. caninum*, *U. stenocephala*, *A. braziliense*). Clients should be advised of measures to be taken to prevent reinfection with intestinal parasites.

EFFICACY: HEARTGARD Plus Chewables, given orally using the recommended dose and regimen, are effective against the tissue larval stage of *D. immitis* for a month (30 days) after infection and, as a result, prevent the development of the adult stage. HEARTGARD Plus Chewables are also effective against canine ascarids (*T. canis*, *T. leonina*) and hookworms (*A. caninum*, *U. stenocephala*, *A. braziliense*).

ACCEPTABILITY: In acceptability and field trials, HEARTGARD Plus was shown to be an acceptable oral dosage form that was consumed at first offering by the majority of dogs.

PRECAUTIONS: All dogs should be tested for existing heartworm infection before starting treatment with HEARTGARD Plus which is not effective against adult *D. immitis*. Infected dogs must be treated to remove adult heartworms and microfilariae before initiating a program with HEARTGARD Plus.

While some microfilariae may be killed by the ivermectin in HEARTGARD Plus at the recommended dose level, HEARTGARD Plus is not effective for microfilariae clearance. A mild hypersensitivity-type reaction, presumably due to dead or dying microfilariae and particularly involving a transient diarrhea, has been observed in clinical trials with ivermectin alone after treatment of some dogs that have circulating microfilariae.

Keep this and all drugs out of the reach of children.

In case of ingestion by humans, clients should be advised to contact a physician immediately. Physicians may contact a Poison Control Center for advice concerning cases of ingestion by humans.

Store between 68°F - 77°F (20°C - 25°C). Excursions between 59°F - 86°F (15°C - 30°C) are permitted. Protect product from light.

ADVERSE REACTIONS: In clinical field trials with HEARTGARD Plus, vomiting or diarrhea within 24 hours of dosing was rarely observed (1.1% of administered doses). The following adverse reactions have been reported following the use of HEARTGARD: Depression/lethargy, vomiting, anorexia, diarrhea, mydriasis, ataxia, staggering, convulsions and hypersalivation.

SAFETY: HEARTGARD Plus has been shown to be bioequivalent to HEARTGARD, with respect to the bioavailability of ivermectin. The dose regimens of HEARTGARD Plus and HEARTGARD are the same with regard to ivermectin (6 mcg/kg). Studies with ivermectin indicate that certain dogs of the Collie breed are more sensitive to the effects of ivermectin administered at elevated dose levels (more than 16 times the target use level) than dogs of other breeds. At elevated doses, sensitive dogs showed adverse reactions which included mydriasis, depression, ataxia, tremors, drooling, paresis, recumbency, excitability, stupor, coma and death. HEARTGARD demonstrated no signs of toxicity at 10 times the recommended dose (60 mcg/kg) in sensitive Collies. Results of these trials and bioequivalency studies, support the safety of HEARTGARD products in dogs, including Collies, when used as recommended.

HEARTGARD Plus has shown a wide margin of safety at the recommended dose level in dogs, including pregnant or breeding bitches, stud dogs and puppies aged 6 or more weeks. In clinical trials, many commonly used flea collars, dips, shampoos, anthelmintics, antibiotics, vaccines and steroid preparations have been administered with HEARTGARD Plus in a heartworm disease prevention program.

In one trial, where some pups had parvovirus, there was a marginal reduction in efficacy against intestinal nematodes, possibly due to a change in intestinal transit time.

HOW SUPPLIED: HEARTGARD Plus is available in three dosage strengths (See DOSAGE section) for dogs of different weights. Each strength comes in convenient cartons of 6 and 12 chewables.

For customer service, please contact Merial at 1-888-637-4251.

3.625" w panel

