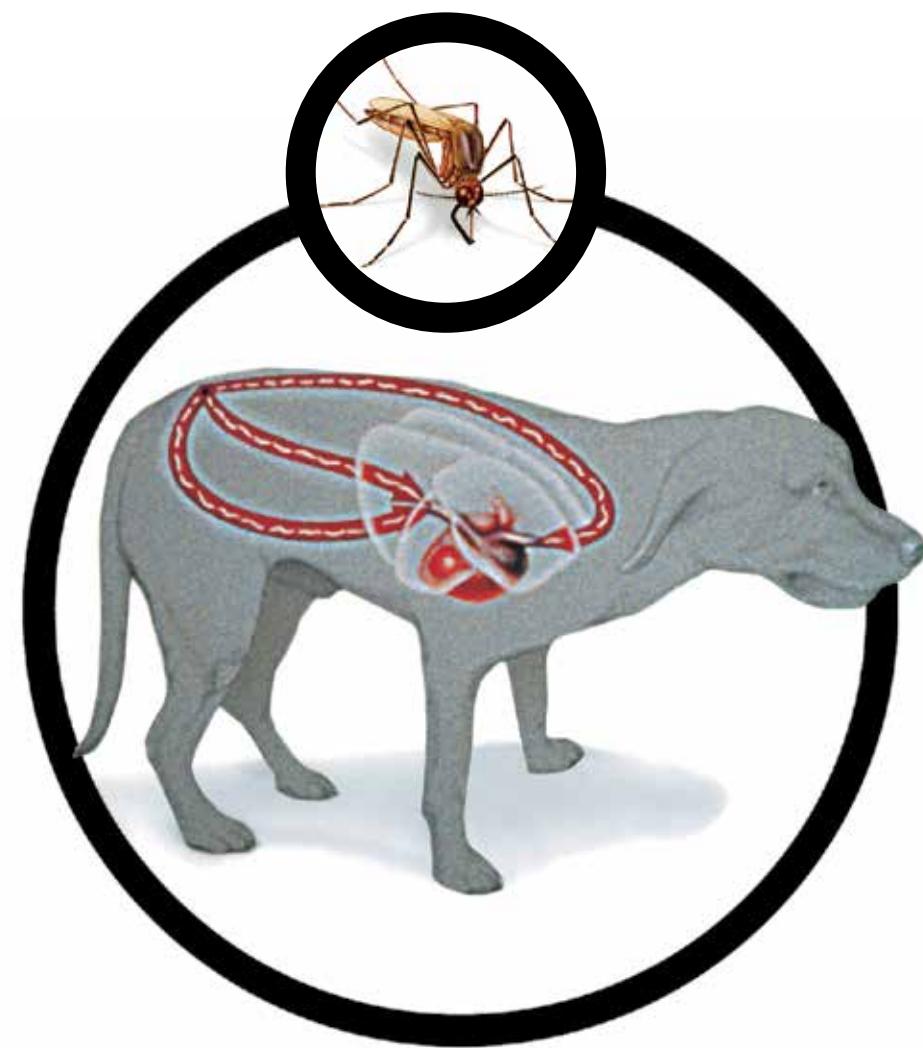
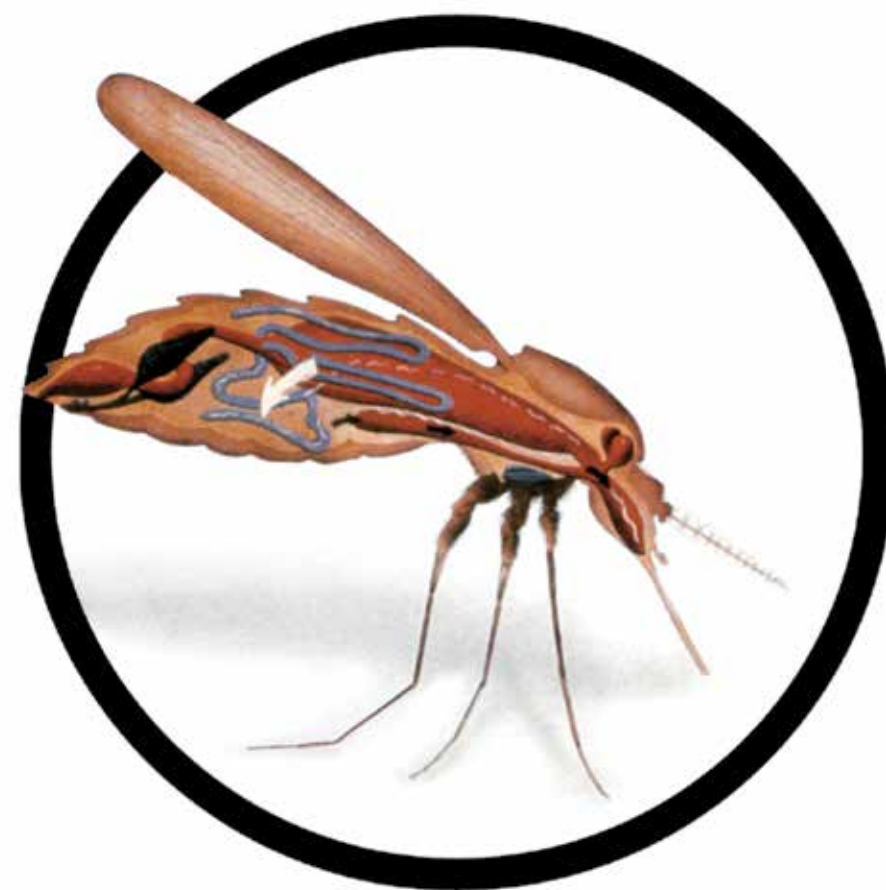


HEARTWORM LIFECYCLE.

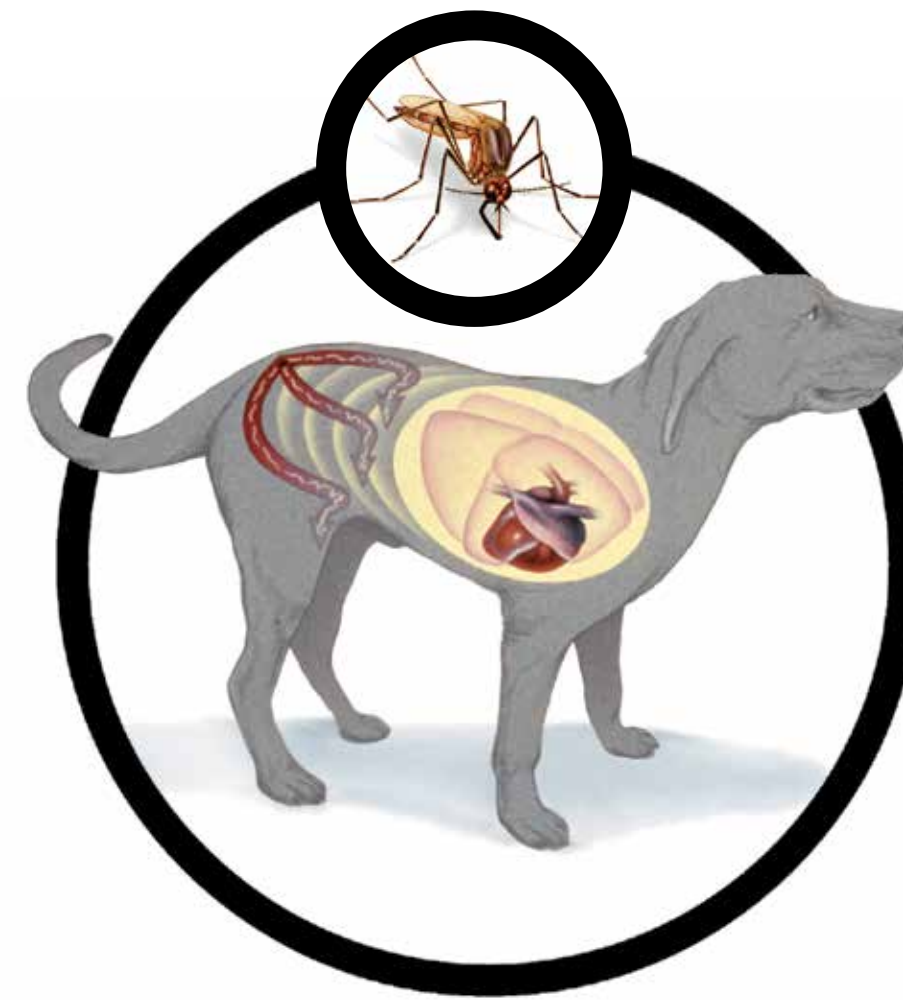
ONE INFECTED BITE IS ALL IT TAKES.



1 A mosquito bites an **infected dog** and ingests tiny heartworm larvae along with the animal's blood.



2 These larvae **develop** into their infective stage inside the mosquito.



3 When the same **mosquito bites another dog**, the larvae infect the healthy animal.



4 Without a monthly dose of **preventive**, the larvae continue to develop inside the dog, eventually reaching the heart and lungs.

MERIAL
A SANOFI COMPANY

©HEARTGARD and the Dog & Hand logo are registered trademarks of Merial. All other trademarks are property of their respective owners. ©2015 Merial, Inc., Duluth, GA. All rights reserved. HGTSMERXAMR00MGS (03/15)

HELP PREVENT HEARTWORM DISEASE with the Real-Beef Chewable dogs love, so it's easy to give.



Heartgard[®] Plus
(ivermectin/pyrantel)



HEARTWORMS



HOOKWORMS/
ROUNDWORMS



PUPPIES
@ 6 WEEKS



PREFERRED^{1*}



SATISFACTION
GUARANTEED⁷

IMPORTANT SAFETY INFORMATION: HEARTGARD Plus is well tolerated. All dogs should be tested for heartworm infection before starting a preventive program. Following the use of HEARTGARD Plus, digestive and neurological side effects have rarely been reported. For more information, contact your veterinarian or visit www.HEARTGARD.com

1 Of dogs showing a preference in two studies, all dogs preferred HEARTGARD Plus Chewables to TRIFEXIS[®] (spinosad + milbemycin oxime) beef-flavored chewable tablets; Executive Summary VS-USA-37807 and VS-USA-37808.
2 Of dogs showing a preference in two studies conducted, all dogs preferred HEARTGARD Plus Chewables to SENTINAL[®] (milbemycin oxime-lufenuron) chewable tablets; Executive Summary VS-USA-37809 and VS-USA-37810.
3 Of dogs showing a preference in two studies conducted, all dogs preferred HEARTGARD Plus Chewables to IVERHART PLUS[®] (ivermectin/pyrantel) beef-flavored tablets; Executive Summary VS-USA-37811 and VS-USA-37812.
4 Of dogs showing a preference in two studies conducted, all dogs preferred HEARTGARD Plus Chewables to IVERHART MAX[®] (ivermectin/pyrantel/praziquantel) beef-flavored tablets; Executive Summary VS-USA-37813 and VS-USA-37814.
5 Of dogs showing a preference in one study conducted, all dogs preferred HEARTGARD Plus Chewables to SENTINEL[®] SPECTRUM (milbemycin oxime/praziquantel/lufenuron) beef-flavored tablet; Executive Summary VS-USA-37801.
6 Opinion Research Corporation, Heartworm Prevention Medication Study, 2012. Data on file at Merial.
7 Data on file at Merial.